

Products /  **CASTALDI** / TELLUX D44 / D44 TELLUX/Q2 / D44K/Q2-5VLWN-MB

## TELLUX D44 D44K/Q2-5VLWN-MB

### TECHNICAL DATA

#### GENERAL



Item code	D44K/Q2-5VLWN-MB
Place installation	outdoor
Name	D44 TELLUX/Q2 / D44K/Q2-5VLWN-MB ground recessed
Note	Patented orbital aiming system VOLVENDO. 5000K on request.
Standard colour	stainless steel frame sandblasted
Environments	façades and architectural works, wellness, hallway, conference hall, places of worship



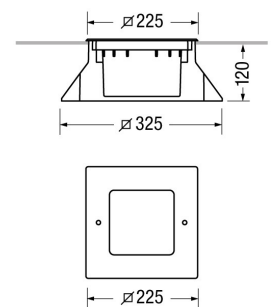
#### PHYSICAL

Installation type	ground recessed
Mounting type	with rough-in housing
Painting	Polyester powder coating, with a pluri-processed against corrosion (passed the exposure of over 1500 hours in a saline mist environment).
Screws	AISI 304 stainless steel screws.
Seals	Silicone Rubber.
Static load	3500Kg
Body	Corrosion resistant die-cast aluminium body. High impact resistant composite technopolymer housing box. AISI 316 stainless steel frame sandblasted.



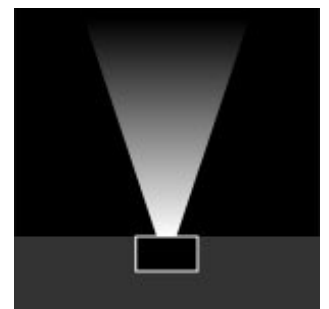
#### DIMENSIONS

A: Total width device (mm)	225
L: Total length device (mm)	225
Built-in shaped	Square
Width built-in (mm)	325
Lenght built-in (mm)	325
Built-in depth (mm)	120
Weight (kg)	4
Volume piece packed (m3)	0,015



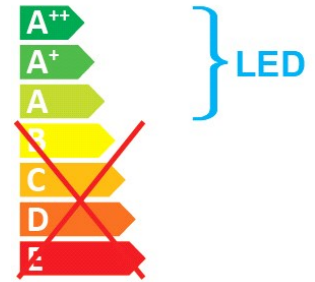
#### OPTICAL SYSTEMS

Opening beam	medium
Adjustable	Yes
Tilt	±15° VOLVENDO
Optical System	Tempered safety glass - 10 mm thickness, mechanical and thermal shock resistant.



## ENERGY SAVING

This luminaire contains built-in LED lamps  
The lamps cannot be changed in the luminaire



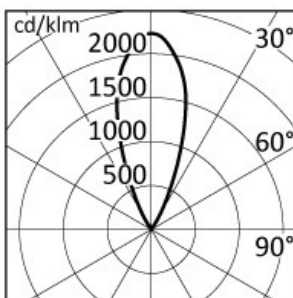
## SOURCES

Source Type	Source Power	System Power	Source	Lamp Socket	Sources Temperature Colour	Nominal Flux	Output Flux	Source description
LED	-	10,6W	-	-	4000K	-	581 lm	-

## ELECTRICAL

Ballast type	Electronic
Mounting ballast type	Integral
Line input	Pre-wired and tested with resin sealed watertight H07RN-F cable (for a fast and secure connection to the main power line, use ACS/CR1 connector or similar).
Voltage	220-240V
Frequency	50-60Hz

## PHOTOMETRICS



h (m)	Ø (m)	Y=0.0 α=β=37°	Emed(lx)
5.00	3.44		34
4.00	2.75		54
3.00	2.07		96
2.00	1.38		215
1.00	0.69		860

## NORMS / DIRECTIVES

Norms	EN 60598-1, EN 60598-2-13
Directives	2014/35/UE, 2014/30/UE

## ACCESSORIES

### INCLUDED ACCESSORIES

#### **Rough-in housing**

Ground rough-in housing box, high impact resistant composite technopolymer (Code PT0716).



## OPTIONAL ACCESSORIES

### Electrical

**Accessory code** ACS/CR1

**Technical description**  
Fast IP68 connector 1bar (10m-1h) for cable Ø7-12mm - 3x1.5mm.



**Accessory code** ACS/CR6

**Technical description**  
4 ways IP68 wiring box for cable Ø5-14mm - 3x1,5mm.

